



For further information, please contact:

Your High School Counselor

or

Lupe Chávez

Coordinator for Dual Enrollment Academies
Office of the Vice President for Academic Affairs

Email: gchavez@southtexascollege.edu

Phone: (956) 872-2619

Fax: (956) 872-2655

Funded by: MSEIP Grant

Dual Enrollment Engineering Academy



South Texas College Dual Enrollment Engineering Academy offers areas of interest in:

- Mechanical
- Industrial
- Civil
- Manufacturing
- Petroleum
- Biomedical



South Texas College

1-800-742-7822

www.southtexascollege.edu



southtexascollege

STATEMENT OF EQUAL OPPORTUNITY: NO PERSON SHALL BE EXCLUDED FROM PARTICIPATION IN, DENIED THE BENEFITS OF, OR BE SUBJECT TO DISCRIMINATION UNDER ANY PROGRAM OR ACTIVELY SPONSORED OR CONDUCTED BY SOUTH TEXAS COLLEGE ON THE BASIS OF RACE, COLOR, NATIONAL ORIGIN, RELIGION, SEX, AGE, VETERAN STATUS, OR DISABILITY.

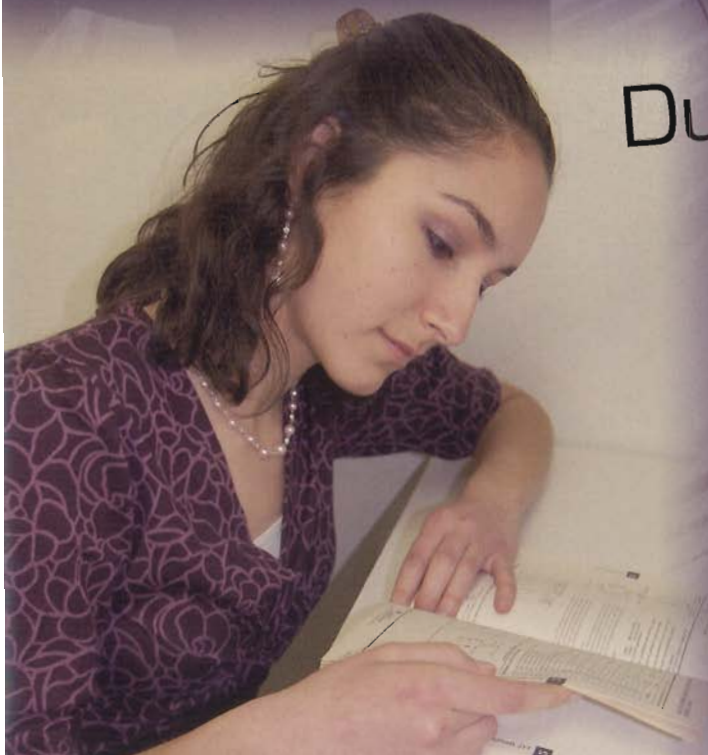
THIS DOCUMENT IS AVAILABLE IN AN ALTERNATIVE FORMAT UPON REQUEST. PLEASE CONTACT (956) 872-8302. INDIVIDUALS WITH DISABILITIES REQUIRING ASSISTANCE OR ACCESS TO RECEIVE THESE SERVICES SHOULD CONTACT DISABILITY SUPPORT SERVICES AT (956) 872-2173.

THIS IS A PUBLICATION OF THE OFFICE OF PUBLIC RELATIONS AND MARKETING, FY 2007-2008, I.C. 0109.



What is the Dual Enrollment Engineering Academy?

DEEA is a two year-round dual enrollment program developed for high school students in the Pecan and Mid-Valley Campus areas who are seriously interested in pursuing careers in Engineering. The Academy is designed to encourage students to explore careers in engineering by providing college course work and engineering related opportunities that motivate, educate, and prepare students for higher education in the field of math and science while completing an Associate of Science (AS) degree in Engineering by the end of their senior year of high school.



Who Can Participate in DEEA?

- ▶ High school students in 11th-12th grades (students may apply during their 10th grade year)
- ▶ Students should be enrolled in the Distinguished Advanced Program (DAP) curriculum
- ▶ Students must have serious interest in pursuing a career in engineering
- ▶ Students must complete a DEEA application which includes writing a brief essay
- ▶ Other requirements apply

Dual Enrollment Engineering Academy

Opportunity Support Services

- ▶ Provide tutoring in coursework
- ▶ Guest speakers
- ▶ College planning and scholarship search workshops
- ▶ Mentorships with local Engineering professionals
- ▶ Academic, college enrichment and personal workshops
- ▶ College/university fairs and college visits to Engineering colleges and universities
- ▶ Academic advising and counseling related to career choices
- ▶ Academic transition assistance to a four-year university
- ▶ Continued student support throughout the program

